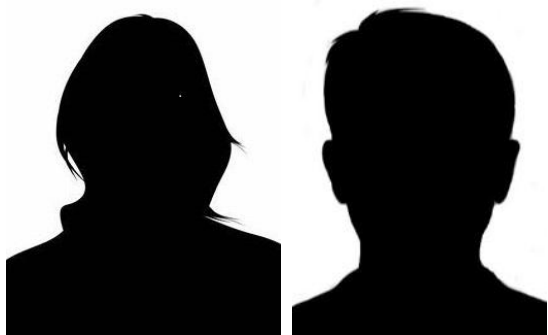


CINDY'S CORNER 199er GAME

9 Tables - Monday, December 21, 1:50 pm

[Click HERE for all results from Cindy's Corner games.](#)



Overall Winners (A1) - 70.49%
1st Place E/W (A1)
Substitutes



Overall Winners (B1) - 54.17%
1st Place E/W (B1)
Suzi Lambeth & Bruce Bingham



Overall Winners (C1) - 49.31%
1st Place N/S (C1)
Liz Rudisill & Bill Hough



1st Place N/S (A1) - 62.85%
Barbara VanAntwerp & Dee Jones



1st Place N/S (B1) - 52.43%
April Parker & Susan Douglas



1st Place E/W (C1) - 45.14%
Ann McCarty & Shirley Bear