

CINDY'S CORNER BBO 499er STARDUST WEEK GAME
16 Tables - Two Sections - Tuesday, November 24, 1:50 pm

[Click HERE for all results from Cindy's Corner games.](#)



Overall Winners (A1) (B1) - 67.81%
1st Place Section 2 E/W (A1) (B1)
Tim Ebert & Doug Mead



Overall Winners (C1) - 59.44%
1st Place Section 1 N/S (C1)
Ellen Hertz & Sharla Slappey



1st Place Section 1 N/S (A1) (B1) - 64.26%
Sharon Hall & Sara Crowder



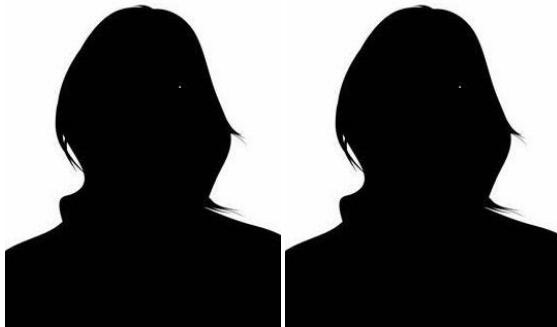
1st Place Section 1 E/W (A1) - 60.19%
Susan Hill & Pam Krueger



1st Place Section 1 E/W (B1) - 55.19%
Rebecca Marshall & Karen Lackey



1st Place Section 1 E/W (C1) - 47.22%
Leigh Myers & Molly Twine



1st Place Section 2 N/S (A1) (B1) - 61.30%
Dorsie Glenn & Becky Pelissaro



1st Place Section 2 N/S (C1) - 41.85%
Ann Harris & Dee Jennings



1st Place Section 2 E/W (C1) - 55.19%
Janet & Howell Riggins